

# Next Generation Mixer

## Model NM500

Sanitary and robust  
Next Generation Mixer  
reducing your cleaning time.

The belt-driven spindle enables  
quiet operation and minimal maintenance  
that requires no lubrication.

The frame structure that  
prevents flour and  
foreign objects from gathering.

Welded bowl that is washable

Ample floor to frame distance  
to facilitate floor cleaning.  
Minimal installation area



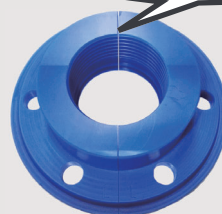
### ✓ Easy detach main seal

- Prevent contamination
- Easy to clean

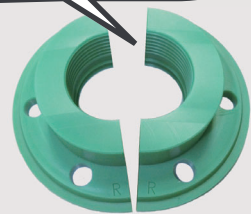
### ✓ Color coded left and right

- Prevent misinstallation

Labyrinth seal to prevent leakage.  
Two-Part Divided Model, Easy Removal



Left Resin Seal



Right Resin Seal

## SPECIFICATIONS

|                                |   |
|--------------------------------|---|
| <b>Model</b>                   | NM500   |
| <b>Dough Weight</b>            | 112 - 225 kg  |
| <b>Main Power Line</b>         | Inverter: 37 kW<br>or Pole change motor (6/12P): 18.5/9.3 kW                        |
| <b>Agitator</b>                | Inverter: 40 - 100 rpm<br>Pole change motor: Slow speed 39 rpm<br>High speed 78 rpm |
| <b>Agitator Shape</b>          | YY-2 or YY-5  |
| <b>Jacket Cooling</b>          | Water Cooling   |
| <b>Motor For Tilting Shaft</b> | 0.75 kW   |
| <b>Bowl Tilting</b>            | Motor Attached Speed Reducer  |
| <b>Cooling Inlet Bore</b>      | R1 1/2 Male   |
| <b>Ingredient Bore</b>         | 1.5S Ferrule  |
| <b>Machine Weight</b>          | 4500 kg   |
| <b>Cooling load</b>            | Standard 12.8 kW  |

Note) Specifications and dimensions are subject to change without prior notice.  
Note) Transformer might be needed depending upon the specifications.

## OSHIKIRI MACHINERY LTD.

<https://www.oshikiri.com/>

4, Kiri-hara-cho, Fujisawa-shi, Kanagawa, 252-0811 Japan  
Phone: 0466-44-6184 Fax: 0466-44-6187 E-mail: [intl@oshikiri.com](mailto:intl@oshikiri.com)

Oshikiri Corporation of America

10425 Drummond Road, Philadelphia, Pennsylvania 19154-3898  
Phone: 215-637-6005 Fax: 215-637-6041 E-mail: [sales\\_oca@oshikiri.com](mailto:sales_oca@oshikiri.com)



OSHIKIRI Website