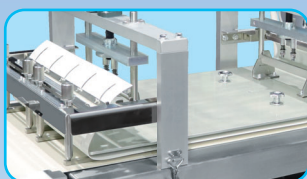


"WIDE FINE" Moulder

Model WF2

Compact designed Moulder for both bread and sweet bread

- Dual-row Moulder for sweet bread. Can be used as a single row Moulder for bread.
- Switching single and dual-row in less time. Production-efficient Moulder.
- Hygienic Stainless steel exterior.

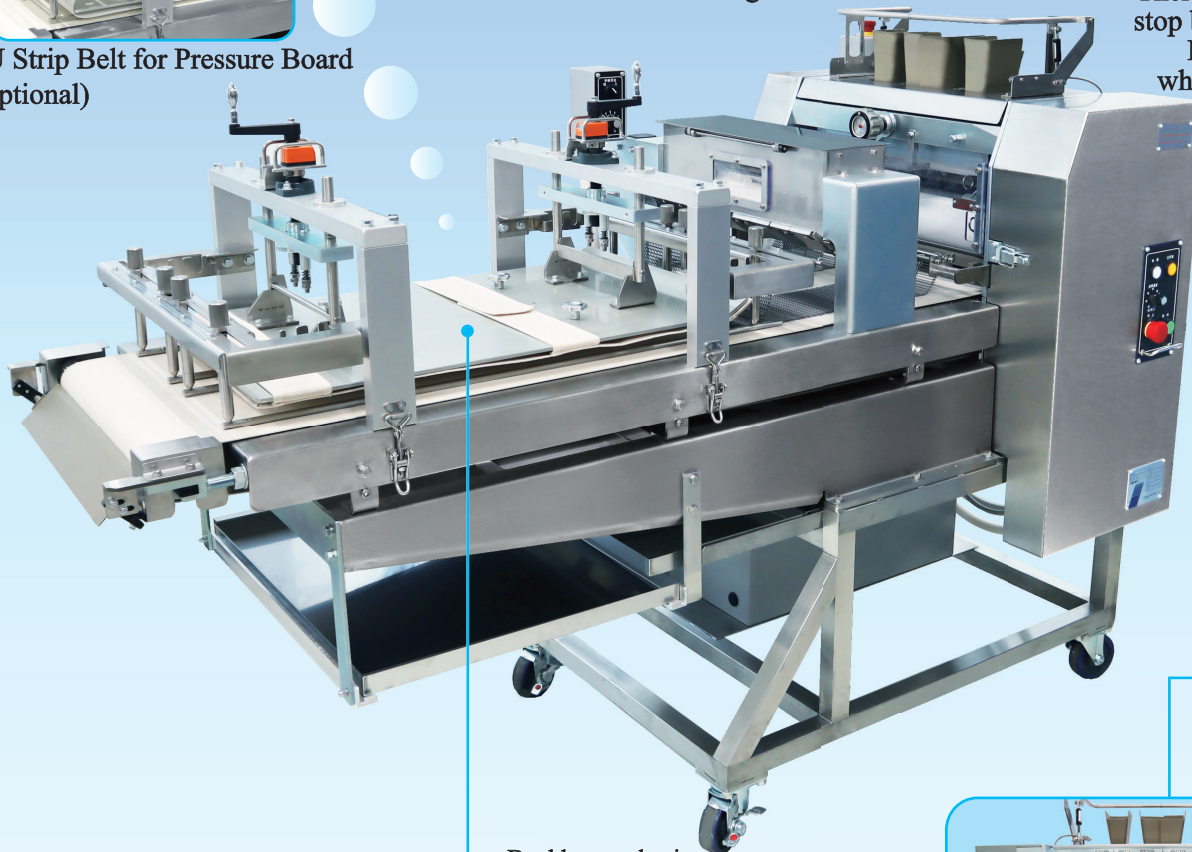


PU Strip Belt for Pressure Board
(Optional)

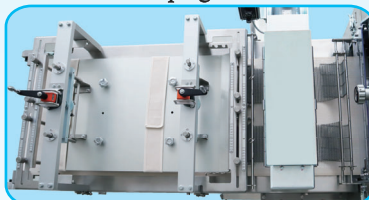
*Inlet Hopper
Dual-use specifications
for single and two rows



There is an emergency
stop bar at Inlet hopper.
Machine stops
when bar is pressed.



Double-row shaping



Single-row shaping



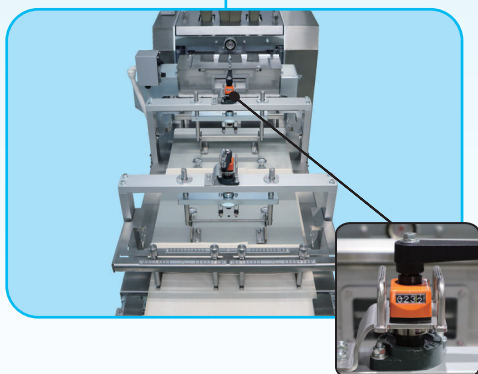
Designed for double-row shaping.
It has multiple uses, single or two
rows as an option.



Rear cover is fully opened for easier
maintenance.
Equipped with a catch pan underneath.



Digital display for easy space checking
of lower rollers. (Optional)

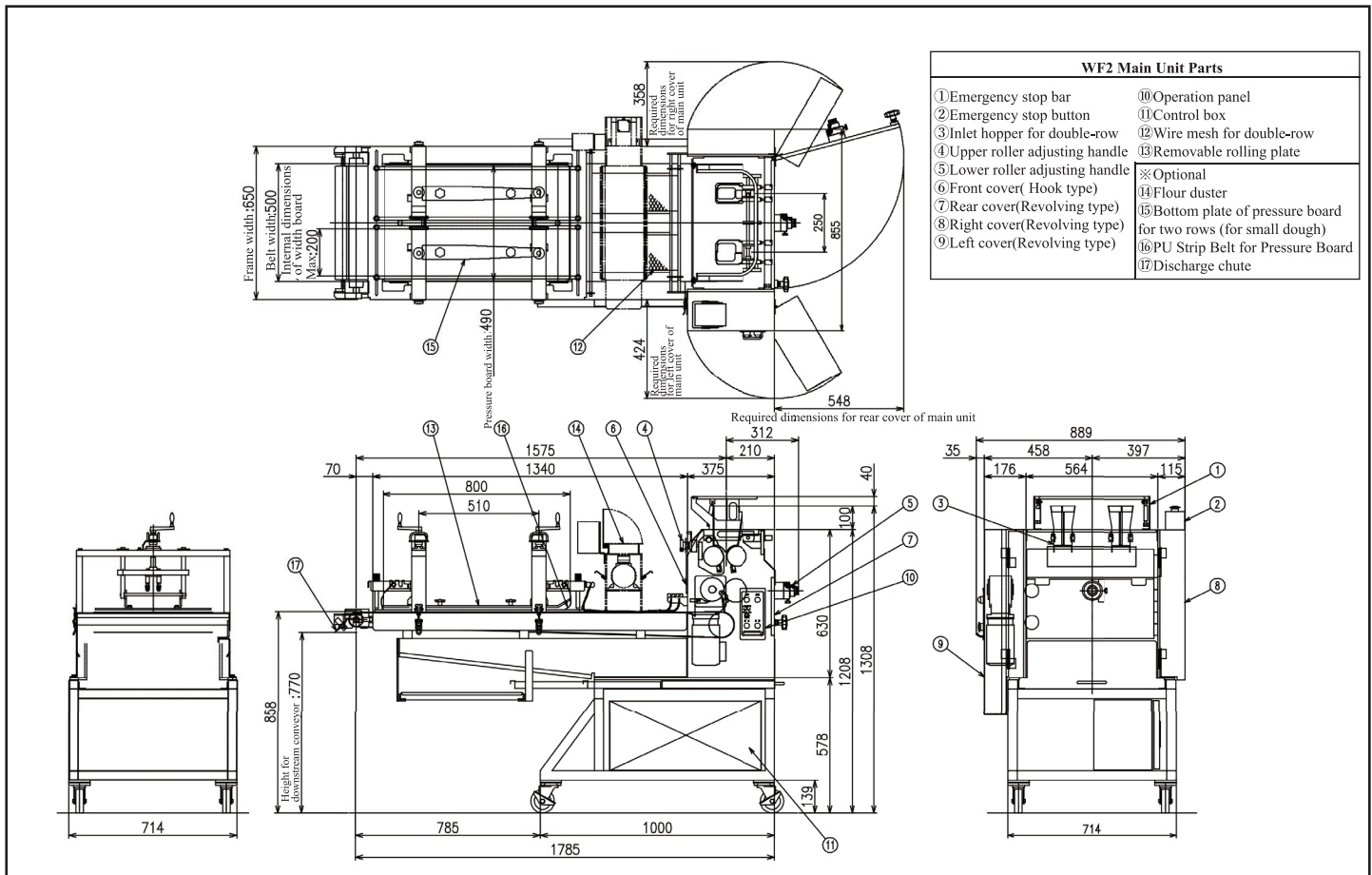


"Release Function" for pressure board.
Pressure board height is indicated
with digital display for easier setting.

"WIDE FINE" Moulder

Model WF2

■ Dimensional Drawing



■ Specifications

Capacity	Double-row specification		7,200pcs/h at 30-110g	
	Single-row specification (Optional)		3,600pcs/h at 265g	
			4,500pcs/h at 80g	
Roller Diameter	Upper	φ85(Polyacetal)	Bottom	φ100 (Teflon)
Roller clearance		9~14mm		1~9mm
Roller speed	27.5~55m/min (Lower roller)			
Pressure board size	W 490mm × L 800mm Single board shape			
Pressure board height adjustment range	10~50mm			
Width plate adjustment range	Double-row specification		80~200mm	
	Single-row specification (Optional)		120~330mm	
Power Source	AC200V 3 Phases			
Motor	For Main drive motor (Standard) 4P 0.4kW			
	Flour duster (Optional) 0.09kW			
Machine weight	Approx. 440kg			

Note) Specifications and dimensions are subject to change without prior notice.

Note) Transformer might be needed depending upon the specifications.

■ Optional items

- Location of the Operation Panel for Right side
- Index indication of upper roller spacing
- Digital indication of the lower roller spacing
- Flour duster
- Bottom plate of pressure board for two-rows (for small dough)
- PU Strip Belt for Pressure Board
- Discharge chute
- Dough Catcher
- Emergency stop switch for discharge area
- Dual-use specifications for one and two rows (Add single-row specification)
 1. Inlet hopper
 2. Wire mesh for single-row
 3. Width scale
 4. Bottom plate of pressure board for single-row (for large dough)

OSHIKIRI MACHINERY LTD.

<https://www.oshikiri.com/>

4, Kiriara-cho, Fujisawa-shi, Kanagawa, 252-0811 Japan

Phone: 0466-44-6184 Fax: 0466-44-6187 E-mail: intl@oshikiri.com

Oshikiri Corporation of America

10425 Drummond Road, Philadelphia, Pennsylvania 19154-3898

Phone: 215-637-6005 Fax: 215-637-6041 E-mail: sales_oqa@oshikiri.com

25. 03. 24 OSHIKIRI P-297-3



OSHIKIRI Website